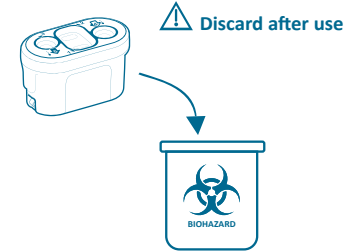
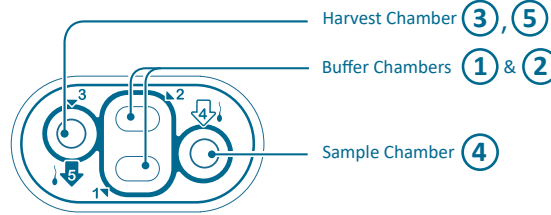
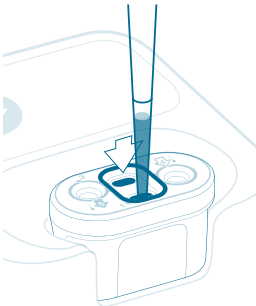
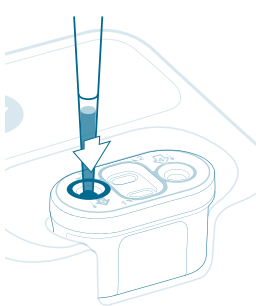
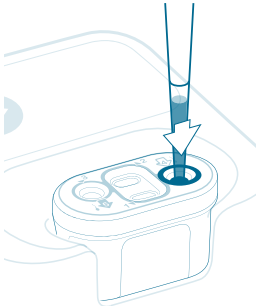
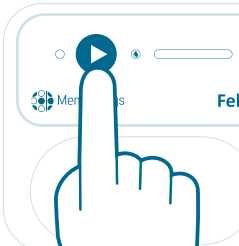

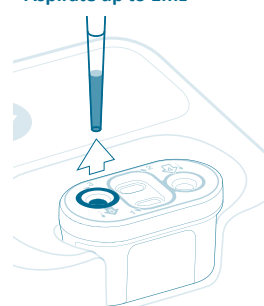


Insert Cartridge into Console prior to preparation.

Ensure Cartridge is seated flush on the bottom of the Cartridge bay.



Preparation	Preparation	Preparation	Processing	Extraction
<p>4mL Buffer Media into ① & ②</p>  <p>Note: Chambers should NOT be filled prior to Cartridge insertion into the console.</p>	<p>1mL Harvest Media into ③</p> 	<p>1mL Liquefied sample into ④</p> 	<p>Initiate processing</p>  <p>6 min</p>  <p>⚠ Processing should be initiated immediately after loading of the Felix Cartridge.</p>	<p>Insert pipette firmly into ⑤</p> <p>Aspirate up to 1mL</p> 

For detailed cartridge preparation instructions refer to **Felix**: Instructions for Use document



Memphasys LTD
 30-32 Richmond Road,
 Homebush West, NSW 2140
 Australia
 Tel: +61 (02) 6415 7300
www.memphasys.com.au